

UT/Pro – Integrated Device for SpotWeld Inspection

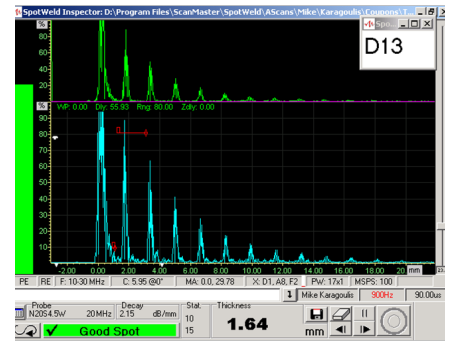
The UT/Pro is a new integrated rugged inspection solution suited for SpotWeld inspection in industrial environments. Designed to last and built to survive in harsh conditions, the UT/Pro is engineered for continuous operation for over 8 hours. Its touch screen responds even when operators' hands are wet or protected with gloves.

The compact housing of the UT/Pro with an integrated ergonomic handle weight 2.3 kg, making it ideal for mobile operation. The UT/Pro is fully compatible with the widely-used UT/Mate and its SpotWeld application.



Main Features:

- 8 hours of continuous operation on Windows® 10 Professional
- weight 2.3 kg
- Hot swap battery solution for extended non-stop operation
- Automatic GO/NO-GO decision making
- Automatic classification of SpotWeld quality
- Real time probe normality and positioning feedback
- Tight control of ultrasonic probe beam size
- Multi-gate capture
- Identification of intermediate peaks
- Support of 2, 3 and 4 plate combinations
- Automatic velocity calculator
- Strong backup-restore function, including automatic scheduler
- Merge feature for adding local changes in the inspection plan
- Network connectivity for data sharing and optional 3rd party data management tools
- Ability to accommodate a virtually unlimited number of inspection set-ups
- Vast A-scan storage capacity using advanced SSD technology for faster and safer data storage
- Wide selection of ScanMaster probe diameters
- Automatic generation of inspection reports, with options for customization



A-Scan automatic classification in test mode



The UT/Pro

UT/Pro Specifications

UT Main Spec.

Analog bandwidth	1 to 45MHz (-6dB)	Memory (RAM)	4GB LPDDR3
Calibrated gain	85dB	Storage	SSD 128GB
Gain step size	0.2dB	Operating system	Windows 10 Pro
Excitation waveform	Negative Square wave	Standards	MIL-STD 810G and IP65 certified
Amplitude	350 V, 8 levels	I/O Interfaces	DC in x 1 USB 3.0 (9-pin) x 1 USB 2.0 (4-pin) x 1 Micro HDMI x 1 Optional Wi-Fi connection
Single pulse width	10-100 nsec, 10 ns resolution	Power	AC Adapter (65W, 100-240VAC, 50/60Hz) Li-Ion battery (15.2V, 2160mAH) LifeSupport™ hot-swappable battery technology
Screen	Touch, 10.1" IPS FHD LumiBond® 2.0 sunlight display		
Optional communication	Wi-Fi, GPS, Bluetooth, 4G LTE		

Remote Control for Main Functions

Power consumption	2.5 W Max.	Humidity	<95% non-condensing
Operating temperature range	5 to 50°C	Dimensions	180mm x 82mm x 25mm (7" x 3.2" x 1") – W X H X D
		Weight	480g (1.06 lb)

* Please contact your nearest ScanMaster representative for an updated list of certified models.

CORPORATE OFFICES

ScanMaster Systems (IRT) Ltd.

5b Atir Yeda St., Industrial Park. Kfar Saba, 4464305, Israel
Tel: + 972 9 7791990
Fax: + 972 9 7791989
E-mail: info@scanmaster-irt.com
Web site: www.scanmaster-irt.com

ScanMaster Systems (IRT) Inc.

1200 Woodruff Road, Unit H-17 Greenville, SC 29607, USA
Tel: + 1 864 288 9813
Fax: + 1 864 605 7110
E-mail: info@scanmaster-irt.com
Web site: www.scanmaster-irt.com